

Govt. of India  
Ministry of Human Resource Development  
Dept. of School Education and Literacy  
Mid Day Meal Division

PAB-MDM meeting  
to consider and approve AWP&B 2018-19

(Date of the meeting: 25.05.2018)



मध्याह्न भोजन योजना  
Mid Day Meal Scheme

APPRAISAL NOTE

State: Mizoram

INDEX

Sl. No.	CHAPTER	Page no.
Overview	Pre-requisite steps for submission of AWP&B	2-3
	Main Issues from Appraisal	
	Best practices	
Part-A	General Information	4-5
Part-B	Review of performance during 2017-18	6-13
Part-C	Recommendations of Appraisal team and quantification of variables for central assistance during 2018-19.	14
Part-D	Analysis sheet.	15 onwards

Overview:

Status on Pre requisite steps required for submission of AWP&B

Pre-requisite step	Status
Plan should be approved by SSMC Meeting	Yes
Release of funds through e-transfer from State / District to at least 50% schools	Yes
100% payment of cost of food grains made to FCI	Yes
100% payment of honorarium to cook-cum-helpers through e-transfer to their bank accounts.	Yes
Annual and Monthly data entry for the FY 2017-18 should be completed up to March 2018.	Annual: 100% Monthly: 98%
Automated Monitoring system should have been operationalized	Yes
Emergency Medical Plan on the lines of the contingency plan.	Yes
Submission of Plan through MDM-MIS	Yes
Action taken note on commitments given by the State Govt. during PAB Meeting of 2017-18	Yes
Action plan for the testing of food samples, Number of food samples tested by accredited labs and findings	Yes
Separate and detailed MME plan	Yes
Plan submitted duly signed by the Pr. Secretary / Secretary of the State/UT within the scheduled date.	Yes

Issues:

1. Delay in release of fund from State to schools (More than 2 months)
2. Less coverage working day (11 day) against to PAB approval.
3. 34% CCH Honorarium paid in Cash.
4. 34% Schools having LPG facility only.
5. 24 Below the norms out comes of 32 Food Sample Tested by Regional Institute of Paramedical and Nursing Science (RIPANS) Aizawl.

Best Practices:

1. State contribution towards cooking cost is more than the minimum mandatory State share (Rs. 1.2 PCPD in Primary and Rs. 1.0 PCPD in Upper Primary)
2. State contribution towards honorarium of cook cum helpers is more than the minimum mandatory State share (Rs. 600 per CCH per month)
3. Social Audit has been conducted in 2 Districts i.e. Mamit and Koasib by State Institute of Rural Development and Panchayati Raj, Aizawl during 2017-18 .
4. Regional Institute of Paramedical and Nursing Science (RIPANS) run under Ministry of Health & Family Welfare.
5. Community contributes seasonal fruits, vegetables as a supplement to the meals served to children; Govt. of India has been engaged for testing of food samples.
6. Kitchen garden in schools for giving the children more nutritious food.(195 kitchen garden in schools)

## Part-A : General Information

### Introduction:

Mid-Day Meal Programme exerts a positive influence on Enrolment and Attendance amongst elementary students in the State of Mizoram. With a view to enhancing enrolment retention, attendance and simultaneously improving nutritional levels among children, this Programme was started in Mizoram from 15th August, 1995. Mizoram's achievements through Mid-Day Meal Programme have been highly commendable. Attendance rates have increased significantly in both Primary Schools and Upper Primary Schools. The scheme also shows a positive impact on health condition of children by providing cooked Mid-Day Meal. District Education Committees and School Management Committees play vital roles in Mid-Day Meal Programme. Mid-Day Meal Programme was started in Mizoram from 15th August, 1995 by distributing raw rice to students. Although orders were issued to serve cooked meals to the students from the year 2002, the Programme could not be implemented on full scale since, the VECs and school authorities had to take up the Programme without cooks, proper kitchen shed and with inadequate kitchen devices in the schools. On 1st March 2005, under the Chairmanship of Principal Secretary to the Govt. of Mizoram, School Education Department, State Level Co-Ordination Committee on Mid-Day Meal had decided to implement the scheme throughout the state by serving cooked meals to Primary students despite numerable shortcomings. As a result, cooked meals were served to primary students in the entire state since 15th Feb.2006. Unlike some other states in the country, the Primary students comprises of Class I to Class IV. From 1st August 2009 the scheme was extended to cover all Upper Primary Schools as well, and has been continued without interruption till date. The State Government started covering Class-VIII from the academic session of 2011-2012. This Scheme has significant and positive impact on regularity, attendance, retention, and discipline and health condition of the students.

1. Basic Information:

(Year 2017-18)

S. No.	INDICATORS	STATUS		
		PRY	U PRY	TOTAL
1. No. of Institutions		PRY	U PRY	TOTAL
i)	Existing Institutions	1441	1091	2532
ii)	Covered during the year	1441	1091	2532
2. No. of Children				
i)	Approved by MDM-PAB	97070	42189	139259
ii)	Enrollment as on 30.9.2017	100061	44889	144950
ii)	Average No. of children availed MDM during 2017-18	92053 [92%]*	41230 [92%]*	133283 [92%]*
3. Coverage of children as per Quarterly Progress Report (QPR)				
i)	Average no. of children availed MDM as per QPR-1	91860 [92%]*	41001 [91%]*	132861 [92%]*
ii)	Average no. of children availed MDM as per QPR-2	92056 [92%]*	41298 [92%]*	133354 [92%]*
iii)	Average no. of children availed MDM as per QPR-3	92114 [93%]*	41336 [93%]*	133450 [93%]*
iv)	Average no. of children availed MDM as per QPR-4	92289 [92%]*	41335 [93%]*	133624 [92%]*
4. No. of Working Days				
i)	Approved for 2017-18	215	220	
ii)	Covered during 2017-18	204	209	
5. Per unit cooking cost Per child per day (in Rs.)				
AVERAGE UNIT COOKING COST PCPD		4.13	6.18	
State's contributions in cooking cost per child per day		1.20	1.00	

\*percentage to enrollment.

Part-B : Review of Performance in 2017-18 (01.04.17 to 31.03.2018)

2. Based on the information provided by the State administration in its AWP&B 2018-19, the performance during 2017-18 (01.04.17 to 31.03.2017) was reviewed. The major issues in implementation during 2017-18 are summarized as under: -

2.0 Coverage of Institutions

Coverage in terms of no. of institutions.

Difference between Existing Vs No. of institutions covered (Achievement) –

i) PRIMARY

The number of existing institutions = 1441

Number of institutions covered during 01.04.17 to 31.03.18 = 1441 (100%)

ii) UPPER PRIMARY

The number of existing institutions = 1091

Number of institutions covered during 01.04.17 to 31.03.18 = 1091 (100%)

2.1 Coverage of Children

2.1.1 Coverage against enrolment :

a) Primary - Coverage in terms of No. of children. Difference between Enrolment vs.

Average No. of Children Aailed MDM (Achievement) (Refer *Table 2.5 of the Analysis Sheet*).

Total Enrolment as on 30.09.2017 = 100061  
Average number of children aailed MDM during 01.04.17 to 31.03.18 = 92053 (92%)

The coverage at State level is well above the national average of 76%.

b) Upper Primary: Coverage in terms of No. of children. Difference between Enrolment vs. Average No. of Children Aailed MDM (Achievement) – (Refer *Table 2.6 of the Analysis Sheet*).

Total Enrolment as on 30.09.2017 = 44889

Average number of children aailed MDM during 01.04.17 to 31.03.18 = 41230(92%)

Coverage of children at upper primary level in the State is well above the national average of 76%.

2.1.2 Coverage against PAB-MDM approval :

- a) Primary : Coverage in terms of No. of children. Difference between PAB Approval (Target) vs. Average No. of Children Availing MDM (Achievement)  
(Refer Table 2.3 of the Analysis Sheet).

The number of children approved by MDM PAB for 2017-18 = 97070  
Average number of children availed MDM during 01.04.17 to 31.03.18 = 92053(95%)

- b) Upper Primary: Coverage in terms of No. of children. Difference between PAB Approval (Target) Vs Average No. of Children Availing MDM (Achievement)  
(Refer Table 2.4 of the Analysis Sheet).

The number of children approved by MDM PAB for 2017-18 = 42189  
Average number of children availed MDM during 01.04.17 to 31.03.18 = 41230 (98%)

- 2.1.3 No. of Meals: Difference between No. of meal to be served (Target) Vs. No. of meals Served (Achievement) - PY+U PY (Refer Table 2.7 & 2.8 of the Analysis Sheet).

The number of meals to be served during 01.04.17 to 31.03.18 = 301.54 Lakh  
The number of meals served during 01.04.17 to 31.03.18 = 273.96 Lakh (91%)

2.2 FOODGRAINS (PRIMARY + UPPER PRIMARY)

- 2.2.1 Level of Opening Balance as on 01.04.17: (Refer Table 3.2 of the Analysis Sheet).

The State had 33.49 MTs.as opening balance against the total allocation of 3479.65 MTs for 2017-18 as on 1.4.17.

- 2.2.2 Level of unspent balance as on 31.03.17: (Refer Table 3.3 of the Analysis Sheet).

The State level closing balance as on 31.03.18 is 245.41 MTs against the allocation.

- 2.2.3 Availability of Food grains: (01.04.17 to 31.03.18) : (Refer Table 3.5 of the Analysis sheet)

Considering that three-fourth of the year was over by 31.03.2018, the districts should have availability of at least 85% of the food grains allocation. State level availability as on 31.03.18 was only 100% of the total allocation.

#### 2.2.4 Utilization of food grains: (Refer Table 3.7 of the Analysis sheet)

An analysis of the utilization of food grains during 2017-18 shows that State has utilized 100% of the allocated food grains.

#### 2.2.5 Payment of cost of food grains to FCI: (Refer Table 3.9 of the Analysis sheet)

The FCI has submitted bills for Rs. 103.37 lakhs during 1.4.2017 to 31.03.2018 towards cost of food grains. As per information provided by the State Government, State has made payment for Rs. 103.37 lakhs (100%) to the FCI.

### 2.3 COOKING COST (PRIMARY + UPPER PRIMARY)

#### 2.3.1 Level of Opening balance as on 01.04.17: (Refer Table 4.2.1 of the Analysis Sheet)

The State had reported Rs 100.67 Lakhs (17%) as opening balance at the beginning of the financial year 2017-18 .

#### 2.3.2 Level of closing balance as on 31.03.18: (Refer Table 4.2.2 of the Analysis Sheet)

The State had a closing balance of Rs.116.63 Lakh(7%) towards cooking cost as on 31.03.18.

#### 2.3.3 Utilization of Cooking cost: (Refer Table 4.5 & 4.6 of the Analysis Sheet)

The State utilized 91% of Cooking Cost available of the allocation of cooking cost. At the district level utilization range between 91-92%.

### 2.4 Reconciliation of utilization and performance during 2017-18 (1.4.17 to 31.03.18)

#### 2.4.1 Mismatch in utilization of Food grains vis-à-vis cooking cost: (Refer Table – 5.1 of Analysis Sheet)

Ideally the percentage utilization of cooking cost and food grains should tally with each other. The data furnished in the AWP&B reveals that there is a mismatch of 2% at State level in utilization of cooking cost (91%) and food grains (93%).

### 2.5 Cook-Cum-Helper (PRIMARY + UPPER PRIMARY):

MDM-PAB had approved 5220 cook-cum-helpers to be engaged during 2017-18, the State has engaged 4998 (96%) cook-cum-helpers. The State has utilized 96% of the



allocated funds for payment of honorarium to cook cum helpers. (*Refer Table – 6.2 of Analysis Sheet*).

**2.6 Utilization of MME (*Refer Table – 7.2 & 7.3 of Analysis Sheet*)**

Against the allocation of Rs. 36.04 lakhs as Central Assistance towards MME funds, the State has utilized only Rs. 36.04 lakh (100%).

**2.7 Utilization of Transportation Assistance (*Refer Table – 8.2 & 8.3 of Analysis Sheet*)**

Against the allocation of Rs. 136.79 lakhs towards Central Assistance towards funds for Transportation Assistance the State has utilized Rs. 136.79 lakhs ( 100%) .

**2.8 Construction of Kitchen-cum-stores (*Reference Table -9.1.2 of Analysis Sheet*)**

Central assistance of Rs. 2970.25 Lakh has been released for construction of 2506 Kitchen cum-Stores. Out of this 2506 kitchen-cum-stores sanctioned till 2017-18, State Government has completed construction of the 100% sanctioned kitchen cum stores. The State has submitted a proposal for 26 Kitchen cum Store. Total School in state is 2532 and Total KS sanctioned 2506 from 2005-06 to 2017-18. So, there is a GAP of 26 (2532 School – 2506 KS Sanctioned already).

**2.9 Procurement of Kitchen devices (*Reference Table -9.2.2 of Analysis sheet*)**

Central assistance of Rs. 324.24 lakhs has been released towards procurement of 4857 (2548 new + 2309 replacement) units of kitchen devices during 2006-07 to 2017-18.

# The State has proposed for 608 Kitchen devices as replacement.

**3. Data Entry Status on the MIS Web Portal**

For smooth functioning of MDMS, Ministry of HRD, MDM Division has developed web based monitoring system i.e. MDM-MIS in collaboration with NIC. In this web portal State/District/Block users have to make Annual and Monthly data entry. The State should monitor that the data is entered in timely manner by District/Block users into the portal. The Annual and monthly data entry status of the State are given below:-

### 3.1 Automated Monitoring Systems (AMS)

District Wise Meals served on : 18 May'2018 Mizoram								
S.No.	District	Total Schools	Reported Schools	% Reported Schools	Total Enrolment	Reported Schools Enrolment	Meals Served	Meals Served Percentage
1	AIZAWL	522	134	26%	30161	8594	7821	91.01%
2	CHAMPHAI	273	63	23%	15796	3779	3659	96.82%
3	KOLASIB	179	16	9%	12819	1579	1333	84.42%
4	LAWNGTLAI	408	10	2%	24694	580	447	77.07%
5	LUNGLEI	508	89	18%	26726	4670	4215	90.26%
6	MAMIT	285	52	18%	17328	3079	2562	83.21%
7	SERCHHIP	144	48	33%	7420	2326	2657	114.23%
8	SAIHA	192	4	2%	12263	320	241	75.31%
	<b>Total</b>	<b>2511</b>	<b>416</b>	<b>17%</b>	<b>147207</b>	<b>24927</b>	<b>22935</b>	<b>92.01%</b>

### 3.2 Annual Data Entry:

FY- 2017-18					
Annual Data Entry Status_ MIZORAM					
S. No.	District	Total Schools	Completed(Saved)	Pending	% Completed
1	AIZAWL	517	515	2	100%
2	CHAMPHAI	260	259	1	100%
3	KOLASIB	178	178	0	100%
4	LAWNGTLAI	404	403	1	100%
5	LUNGLEI	553	545	8	99%
6	MAMIT	272	272	0	100%
7	SAIHA	191	191	0	100%
8	SERCHHIP	140	140	0	100%
	<b>Total</b>	<b>2515</b>	<b>2503</b>	<b>12</b>	<b>100%</b>
Source : <a href="http://www.trgmdm.nic.in">www.trgmdm.nic.in</a> as on 19 May'18 till 17:00					

### 3.3 Monthly Data Entry

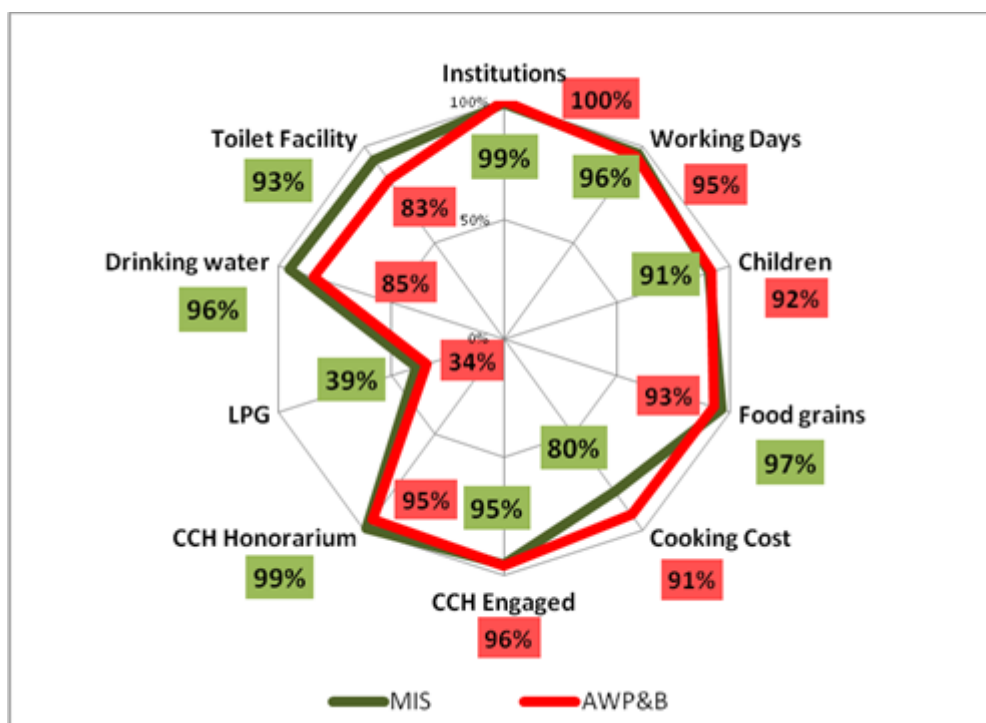
(Figures in %)

FY- 2017-18															
Monthly Data Entry Status_ MIZORAM															
S. No.	District	Total Schools	% April	% May	% June	% July	% Aug	% Sep	% Oct	% Nov	% Dec	% Jan	% Feb	% Mar	Average %
1	AIZAWL	517	100%	100%	100%	100%	100%	100%	100%	93%	82%	82%	82%	81%	93%
2	CHAMPHAI	260	100%	100%	100%	100%	100%	100%	100%	100%	100%	100%	100%	100%	100%
3	KOLASIB	178	100%	100%	100%	100%	100%	100%	100%	100%	100%	100%	100%	100%	100%
4	LAWNGTLAI	404	100%	100%	100%	100%	100%	100%	100%	100%	100%	100%	100%	100%	100%
5	LUNGLEI	553	99%	99%	99%	99%	99%	99%	99%	99%	99%	99%	99%	99%	99%
6	MAMIT	272	100%	100%	100%	100%	100%	100%	100%	100%	100%	100%	100%	100%	100%
7	SAIHA	191	100%	100%	100%	100%	100%	100%	100%	100%	100%	100%	100%	100%	100%
8	SERCHHIP	140	100%	100%	100%	100%	100%	100%	100%	100%	100%	100%	100%	100%	100%
	<b>Total</b>	<b>2515</b>	<b>100%</b>	<b>100%</b>	<b>100%</b>	<b>100%</b>	<b>100%</b>	<b>100%</b>	<b>100%</b>	<b>98%</b>	<b>96%</b>	<b>96%</b>	<b>96%</b>	<b>96%</b>	<b>98%</b>
Source : <a href="http://www.trgmdm.nic.in">www.trgmdm.nic.in</a> as on 19 May'18 till 17:18 hrs.															

### 3.4 Comparison in Data: MIS and AWP&B :-

COMPONENT	MIS	AWP&B
Institutions	2515	2532
Working Days	209	207
Children	131917	133283
Food grains (In MT)	3361.24	3233.82
Cooking Cost (Rs. in Lacs)	1285.18	1469.31
CCH Engaged	4974	4998
CCH Honorarium (Rs. in Lacs)	776.86	740.97
LPG	987	873
Drinking water	2421	2146
Toilet Facility	2365	2095

The graphical representation of the differences in data from MDM-MIS and as submitted by the State through Annual Work Plan & Budget is given below:

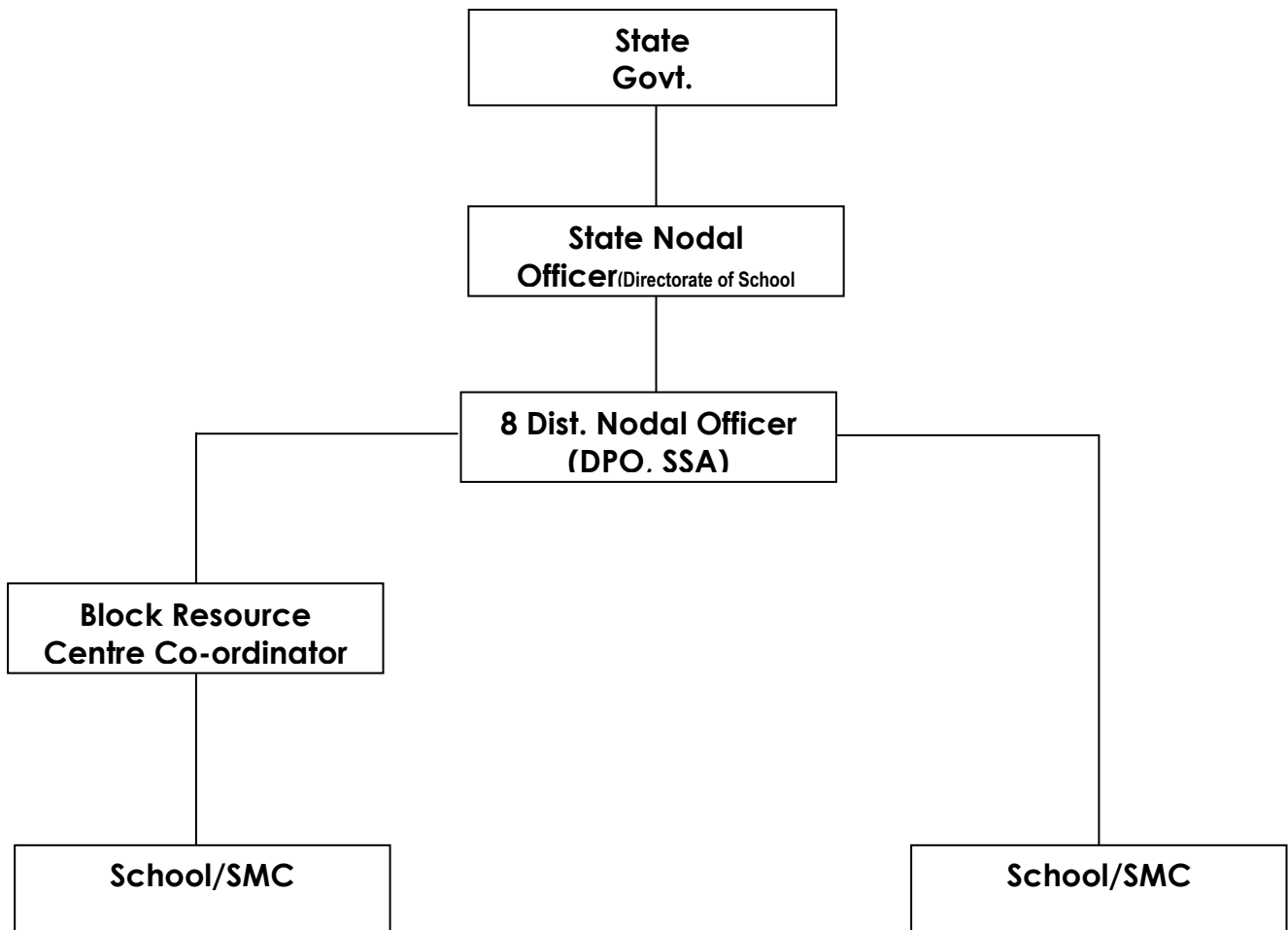


#### 4. Release of funds

The Govt. of India released ad-hoc grant on 03.05.2017, first installment on 30.06.2017 and 2nd Installment on 31.11.2017. As per the information provided by the State, ad-hoc grant was received at school levels in 18.07.2017, balance of 1<sup>st</sup> installment in 15.09.2018 and 11nd installment in 24.03.2018.

5. Management Structure

Management structure of implementation of Mid-Day Meal Scheme may be depicted as under



6. System for payment of cost of foodgrains to FCI

Presently, payment of food grains costs is paid by the state office to the FCI through cheque.

7. Menu

Each and every districts prepares their MENU as per the availability of Seasonal Vegetables in the areas. State staple food is RICE. Dal and different kind of Vegetables were served along with rice.

8. Community involvement

Contribution of commodity by the community in the line with Tithi Bhojan is not practiced in the state, but in many villages' parents of children contributed different articles such as vegetables, fire wood etc for Mid-Day Meal

9. Capacity Building

Awareness campaigns have been conducted at district level for school teachers and officials involved at the district, sub-division, block and cluster levels. Important information are disseminated through website and Facebook page. In addition, the School Education Department has signed Memorandum of Understanding with Doordarshan Kendra, Aizawl, under which a half-hour programme has been slotted at 6:00 pm every Thursday by DDK, Aizawl for telecasting of various programmes and activities of School Education Department. The implementation of MDM Scheme, with all its components including food safety and poisoning, community participation, children's entitlement, etc. feature prominently in these telecasts.

It further to state that Global Hand washing day on 15th October 2017 was observed in all districts with line departments like, Health and Family Welfare Department, Public Health Engineering Department and community members under the guidance of Deputy Commissioner in each district.

10. Tasting of Meal

Tasting of Mid-Day Meal is done at least 2-3 persons such as Cook-cum-Helpers and School Teachers and also community members if parents of students are present.

11. Grievance Redressal Mechanism

In order to redress public grievances, School Education Department have a dedicated mobile phone which is kept in the custody of the Deputy State Nodal Officer. Any person who intends to know/complaint about MDM can contact this number by means of call or SMS. All the district offices are also having Mobile Phones to receive complaints at all time. State Level complaint No. is 8974245007.

12. Contingency Plan to avoid any untoward incident

Serving of Mid-Day Meal is very active and regular. It has partially related with thousands of children every day through Mid-Day Meal. As such, hygienic Mid-Day Meal plays very important role in their daily life and also in the future. It can be imagined how a small accident or negligence on the part of management, teachers and those workers serving the meal can affect the lives of a big number of innocent children, which could even loss of precious lives of many children. With a view to preventing such Mid-day Meal mishap, Contingency Plan needs to be developed. In case of any contingency arises, the standard operating procedure of the Mid-Day Meal contingency has to be executed immediately.

13. Social Audit

Social Audits is conducted in Kolasib and Mamit District by State Institute of Rural Development & Panchyati Raj during January 2018. They visited 20 schools in both the district. Detailed report is enclosed for reference.

Part-C : Recommendations of Appraisal Team for 2018-19

No	Details		State's Proposal for FY 2018-19		Recommendations by Appraisal Team for FY 2018-19	
1	No. of Children & Institutions					
	Category	No. of institutions	No. of Children	No. of institutions	No. of Children	
A	Primary					
1.1	Govt. + LB schools	1441	<b>92114</b>	1441	92114	
1.2	Govt. Aided	0	<b>0</b>	0	0	
1.3	Special Training Centres	0	<b>0</b>	0	0	
1.4	STC-NCLP	0	<b>0</b>	0	0	
1.5	Madrasa/Maqtabs	0	<b>0</b>	0	0	
	<b>Total (A)</b>	<b>1441</b>	<b>92114</b>	<b>1441</b>	<b>92114</b>	
B	Upper Primary					
1.6	Govt. + LB schools	1091	<b>41336</b>	1091	41336	
1.7	Govt. Aided	0	<b>0</b>	0	0	
1.8	Special Training Centres	0	<b>0</b>	0	0	
1.10	Madrasa /Maqtabs	0	<b>0</b>	0	0	
	<b>Total (B)</b>	<b>1091</b>	<b>41336</b>	<b>1091</b>	<b>41336</b>	
	<b>GRAND TOTAL (A) + (B)</b>	<b>2532</b>	<b>133450</b>	<b>2532</b>	<b>133450</b>	
2	No. of Working days					
2.1	Primary		202		202	
2.2	Upper Primary		212		212	
2.3	STC (NCLP)		0		0	
3	No. of Cook-cum Helpers					
3.1	Primary		3061		3061	
3.2	Upper Primary		2159		2159	
3.3	Total		5220		5220	
4	Kitchen-cum-stores		26	26		
5	Kitchen devices	New Schools	Nil	Nil		
		Replacement	608	608		

#Sanctioned in the year 2012-13 and are eligible for replacement.

State: Mizoram

QUANTIFICATION OF CENTRAL ASSISTANCE FOR 2018-19

A. Food grains

Sl. No.	Stage	No. of Children	No. of Working days	Quantity in MTs.
1	Primary (@ 100 gms per child per school day)	92114	202	1860.70
2	Up. Primary (@150 gms per child per school day)	41336	212	1314.49
3	NCLP (@150 gms per child per school day)			
4	Drought			
4.1	Primary			
4.2	Upper Primary			
TOTAL		133450		3175.19

B. Cost of Foodgrains, Cooking cost, Transport Assistance, Hon. to cook-cum-helpers and Management Monitoring and Evaluation (MME)

Sl. No.	Component/norm	Amount admissible (Rs. in lakh)
1	2	3
Primary		
1	Cost of Food grains @ Rs. 3000/- per MT for 1860.70 MT rice	55.82
2	Unit Cooking Cost- Rs. 4.13 per day / per child for 92114 children for 202 days	
2.1	Central Share @ Rs. 3.72 per child/day	692.18
2.2	Minimum Mandatory State Share @ 0.41 per day/per	76.29
3	Transportation Cost @ Rs. 3970 Per MT food grains (92114 x 202 days x 0.0001 MT x Rs. 3970.00)	73.87
4	Honorarium for cook cum Helper	
4.1	Central Share - (3061 x Rs.900x 10 months)	275.49
4.2	Minimum Mandatory State Share - (3061 x Rs. 100 x 10 months)	30.61
5	Management Monitoring and Evaluation (MME) @ 1.8% of the i) Cost of food grains ii) Cooking cost iii) Cost of transportation and iv) Honorarium to cook – cum-helpers	19.75
TOTAL - {1+2.1 +3+4.1+5}		1117.12

Upper Primary		
6	Cost of Food grains @Rs. 3000/- per MT for 1314.48MT rice	39.43
7	Unit Cooking Cost 6.18 per day / per child for 41336 children for 212 days	
7.1	Central share @ Rs.5.56 per child/day	487.24
7.2	Minimum Mandatory State Share @ Rs.0.62 per child/day	54.33
8	Transportation cost @ Rs. 3970.00 Per MT food grains (41336 x 212 days x 0.00015 x 3970.00)	52.19
9	Honorarium to cook cum Helper	
9.1	Central Share - (2159 x Rs.900x 10 months)	194.31
9.2	Minimum Mandatory State Share- (2159 x Rs.100x 10 months)	21.59
10	Management Monitoring and Evaluation (MME) @ 1.8% of the 1) Cost of food grains 2) Cooking cost 3) Cost of transportation and 4) Honorarium to cook – cum-helpers	13.92
	TOTAL - {6+7.1 +8+9.1+10}	787.09
Grand Total (Primary + Upper Primary )		1904.21
11	Non-Recurring Central Assistance	
11.1	Kitchen devices: 608(Replacement) (608 x Rs. 5000)	30.40
11.2	Kitchen-cum-stores: (26 X Rs 3.50) # SOR- 2013	81.9
Grand Total for non-recurring central assistance		112.30

- C. Drought : NIL  
D. Non-recurring : 112.30

E. Total Requirement of Funds for 2018-19

(Rs. in lakh)

Component		As per existing norms	
		Centre	Minimum mandatory State share
Recurring	Normal	1904.21	182.83
	Drought	0	0
Non- recurring		112.30	9.1
Total		2016.51	191.93

--oOo--